



Snabb CNC Aluminum Radio Knobs (P2 Fitment)

Tools Needed: None

Thank you for your purchase. Our CNC Aluminum Radio Knobs are very easy to install and look great!

Installation of Snabb CNC Aluminum 28mm and 22mm Radio Knobs:

1. Your radio does **NOT** need to be removed. Simply grab ahold of the factory plastic/rubber knobs and pull towards yourself (away from the radio).

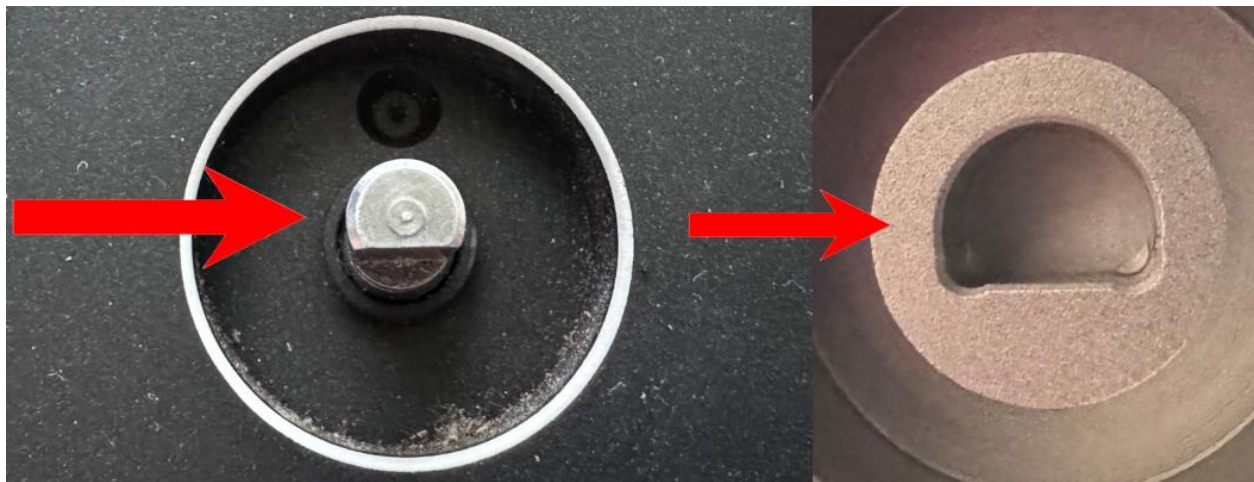




2. Once the factory Knob has been removed, you can see there is a D-shaped pattern on the factory shaft. Line the Snabb Aluminum Knob up with the shaft and firmly press the Snabb Aluminum Knob onto the radio.

****NOTE: Our Aluminum Radio knobs are VERY tight fitting by design. This is to ensure proper fitment while making sure the knob does not fall off during use. You will need to use considerable force to properly install our Aluminum Knobs.**

Should you ever need to remove the knobs, the radio faceplate will need to be removed. Once the faceplate is removed, you can slide 2 screw drivers underneath the knob and pry upwards. Take great care to not scratch the knobs.



Installation of Snabb CNC Aluminum 6mm Radio Knobs:

1. Your radio does **NOT** need to be removed. Simply grab ahold of the factory plastic/rubber knobs and pull towards yourself (away from the radio).
2. Take the Snabb 6mm Radio Knob and apply 2 small drops of blue thread locker (provided in the kit) to the rear hole of the Snabb Radio Knob. Quickly install the Knob on the factory radio. Ensure the knob is fully seated / installed by pressing firmly. Please let the knob sit for roughly 20 minutes before using.