



www.snabb.us

Installation Instructions for (CPK-P3T6):
2.75" Turbo charge air piping kit
 Volvo T6, R-Design T6, Polestar T6, S60, XC70, V60

<p>Equipment/tools needed:</p> <p>3/8" and 1/4" drive ratchets Metric socket sets (7mm and up) Ratchet Extensions Mirror T30 - Torx Bit</p> <p>Tips/Additional tools:</p> <p>WD-40 or soapy lubricant will aid in the positioning of pipes and silicone. Without lubricant it will be difficult to position the parts for correct assembly. Having wobble joints and varying lengths for ratchet extensions will make the removal process easier.</p>	<p>Included in Kit:</p> <p>[1] 2.75" Aluminum pipe with 1/8" NPT water methanol injection bung included [1] 2.75" Aluminum turbo outlet pipe [4] Snabb heavy duty 5mm silicone hoses [1] size #36 ABA 316 SS marine grade clamp [6] size #44 ABA 316 SS marine grade clamps [1] size #48 ABA 316 SS marine grade clamp (1) 1/8" NPT cap for WMI bung</p>
--	---

Before beginning remove the six T30 Torx head bolts holding the protective splash guard to the sub-frame. Set splash guard aside to allow access for disassembly of charge piping.

REMOVAL

Turbo outlet

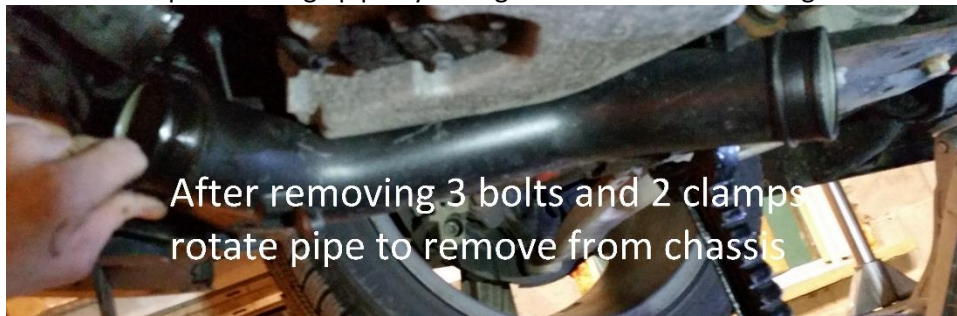
- Using a 7mm socket loosen the two clamps on the turbo outlet silicone.
- Remove silicone that connects turbo outlet to lower plastic charge pipe.

See pictures below- next page



Lower charge pipe

- Using an 8mm socket remove the three M6 bolts that hold the lower plastic charge pipe to the motor.
- Using a 7mm socket remove the clamp on the intercooler side of the charge pipe and disconnect the silicone hose.
- Remove the lower plastic charge pipe by sliding it down between the engine and subframe



Intercooler inlet hose

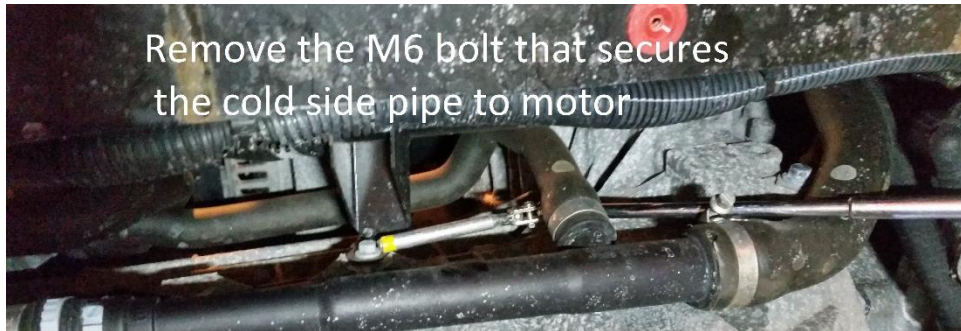
- Locate the small square access hole (passenger side) in the intercooler support bracket, located directly beneath intercooler inlet.



- Insert a 1/4 inch ratchet extension through the square access hole and with a 7mm socket, loosen the intercooler inlet hose clamp.
- Remove the intercooler inlet hose.

Throttle body pipe:

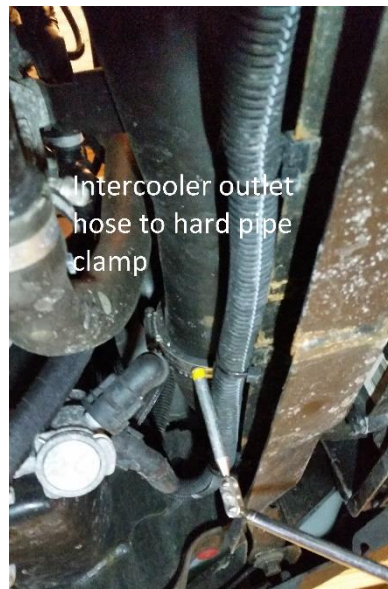
- With an 8mm socket remove M6 bolt located near the outlet side of front charge pipe.



- With a 13mm socket remove M10 bolt located near the inlet side of the front charge pipe.



- Remove the two clamps holding front charge pipe to throttle body hose and intercooler outlet hose then remove front charge pipe from engine bay.

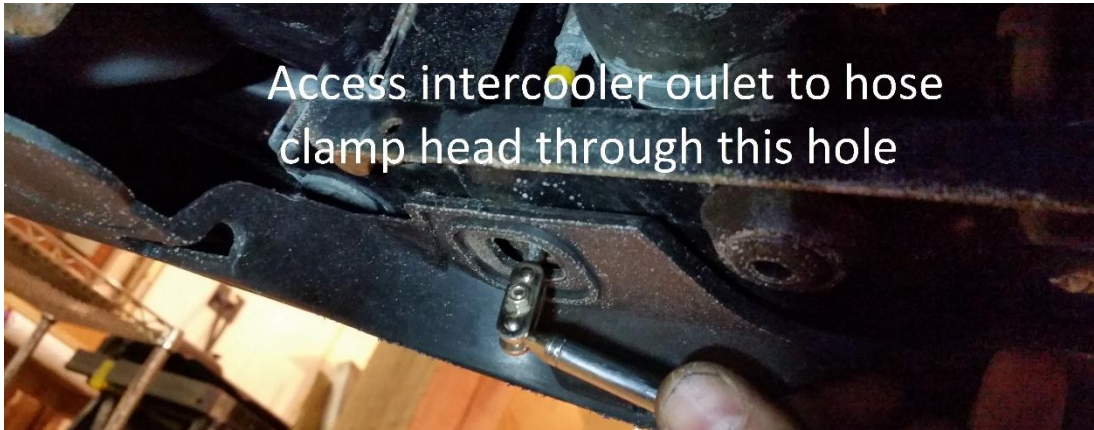


Throttle body hose

- Loosen throttle body hose clamp with a 7mm socket then remove throttle body hose.

Intercooler outlet hose

- Locate the access hole on the bottom of the intercooler bracket (drivers side) and loosen the clamp holding the intercooler outlet hose to the intercooler.
- Remove the hose from the intercooler outlet.



INSTALLATION

Turbo outlet

- Spray inside of turbo outlet hose with WD40 for ease of installation.
- Place a #36 clamp over the turbo end of the Snabb silicone hose and a #44 clamp over the end of the hose that will connect to the lower charge pipe.
- Loosely attach the hose to the turbo outlet.

Lower charge pipe

For the following steps please refer to the picture below for reference on the orientation of the hoses and pipes since it is difficult to get pictures of the orientation on the vehicle



Assemble piping as shown



This side of the hose goes on IC inlet

- Starting from the Intercooler side of the engine slowly work the lower charge pipe into position between the engine and the subframe. Continued...

- Insert lower charge pipe into turbo outlet silicone hose.
- Next rotate the pipe to position the mounting bracket. Once you have the silicone on the pipe and the bracket positioned, partially tighten the clamp then move onto the intercooler inlet hose.

Intercooler inlet hose

- Spray the inside of both ends of the hose with a little WD40 to aid installation.
- Place #44 clamps on either side of the hose. Starting with the intercooler inlet place the hose over the inlet with the clamp positioned facing down and at a slight angle so that it is facing the square hole in the intercooler support, partially tighten the clamp.
- Install the new Snabb hose onto the aluminum pipe and then do a final adjustment to get the pipe, bracket and hoses lined up. This will take some adjustments to get just right. **The silicone will be touching the subframe when it is installed** and there is very little clearance on any side so Just keep working at it until you get them lined up. With an 8mm socket tighten the M6 bolt through the bracket and tighten down onto the motor.
- Tighten and then double check the 4 hose clamps.

Intercooler outlet hose:

For the following steps please refer to the picture below for reference on the orientation of the hoses and pipes since it is difficult to get pictures of the orientation on the vehicle



Assemble piping as shown



This side of hose goes on the IC outlet

- Place a #44 clamp on either end of the silicone hose and install the silicone onto the intercooler outlet first with the head of the clamp facing down and slightly at an angle toward the square hole in the intercooler support and partially tighten the clamp.

Throttle body hose:

- Place the throttle body hose onto the throttle body and then partially tighten a #48 clamp onto the throttle body inlet. Place a #44 clamp onto the bottom part of the hose and hold in place while you install the aluminum pipe.

Throttle body pipe:

- Insert the straight side of the aluminum pipe into the intercooler outlet hose then partially tighten the #44 clamp.
- Insert the other side of the pipe into the throttle body hose. Align the bracket with the bolt hole. Tighten the bolt down to the motor and tighten all the hose clamps once you position the aluminum pipe correctly.

Finally triple check all of your pipe connections, hose clamps and bolts to make sure they are tight. Reinstall the splash pan and take your upgraded car out for a test drive!

Enjoy and we hope that you're happy with your purchase
Kristian Woodall
Snabb Performance Parts